



Great Eastern Road, London, E15 1DE

A modern one bedroom naturally bright apartment; located moments from Stratford station offer excellent transport across London.

The apartment boasts a generous open-plan kitchen and living room with access to a private balcony, a spacious double bedroom with built-in storage, and a sleek bathroom. Additional storage can be found in the hallway.

The property is surrounded by a plethora of local amenities such as restaurants, supermarkets, shopping centre, bars, cafes, Queen Elizabeth Olympic Park, and excellent transport links.

- Modern One bedroom Apartment
- 24/7 concierge, residents' gym, secure bike storage
- Private Balcony
- Excellent Transport Links (Jubilee, Central, DLR, Elizabeth, Overground, National Rail)
- Close to Local Amenities
- Plenty of Storage
- 2 minute walk to Stratford station and Westfield
- Zoned underfloor heating, fully integrated kitchen, built-in wardrobes
- Furnished

Alex & Matteo
ESTATE AGENTS

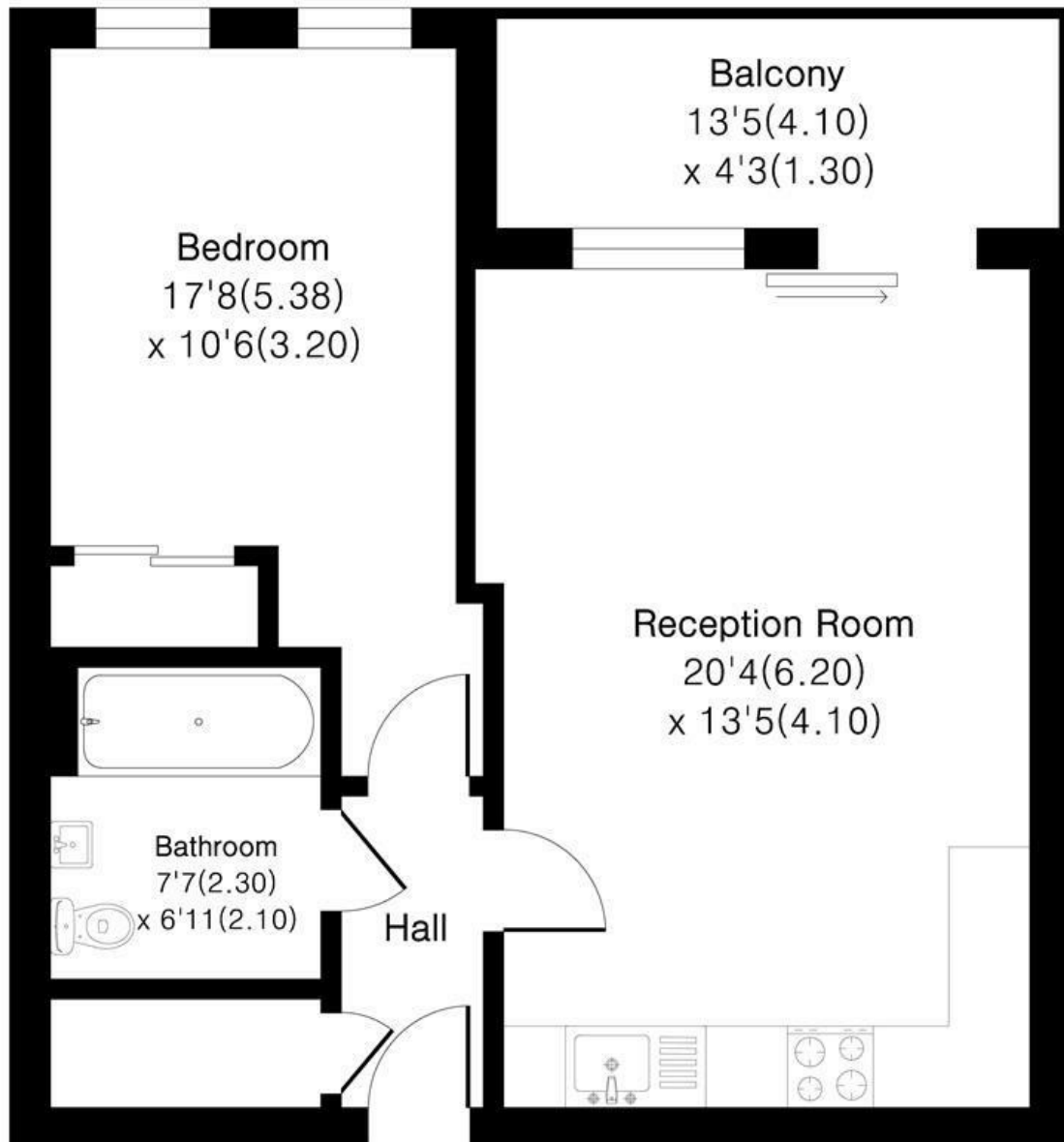
£2,000 Per month



Legacy Tower E15

Approximate Area = 536 sq ft / 49.7 sq m

For identification only - Not To Scale



Alex & Matteo
ESTATE AGENTS

Floor plan Produced in accordance with RICS Property Measurement 2nd Edition.
Incorporating International Property Measurement Standards (IPMS2 Residential).
Produced for Alex & Matteo Estate Agents.



Energy Efficiency Rating		
	Current	Potential
Very energy efficient - lower running costs		
(92 plus) A		
(81-91) B	84	84
(69-80) C		
(55-68) D		
(39-54) E		
(21-38) F		
(1-20) G		
Not energy efficient - higher running costs		
England & Wales		
EU Directive 2002/91/EC		